

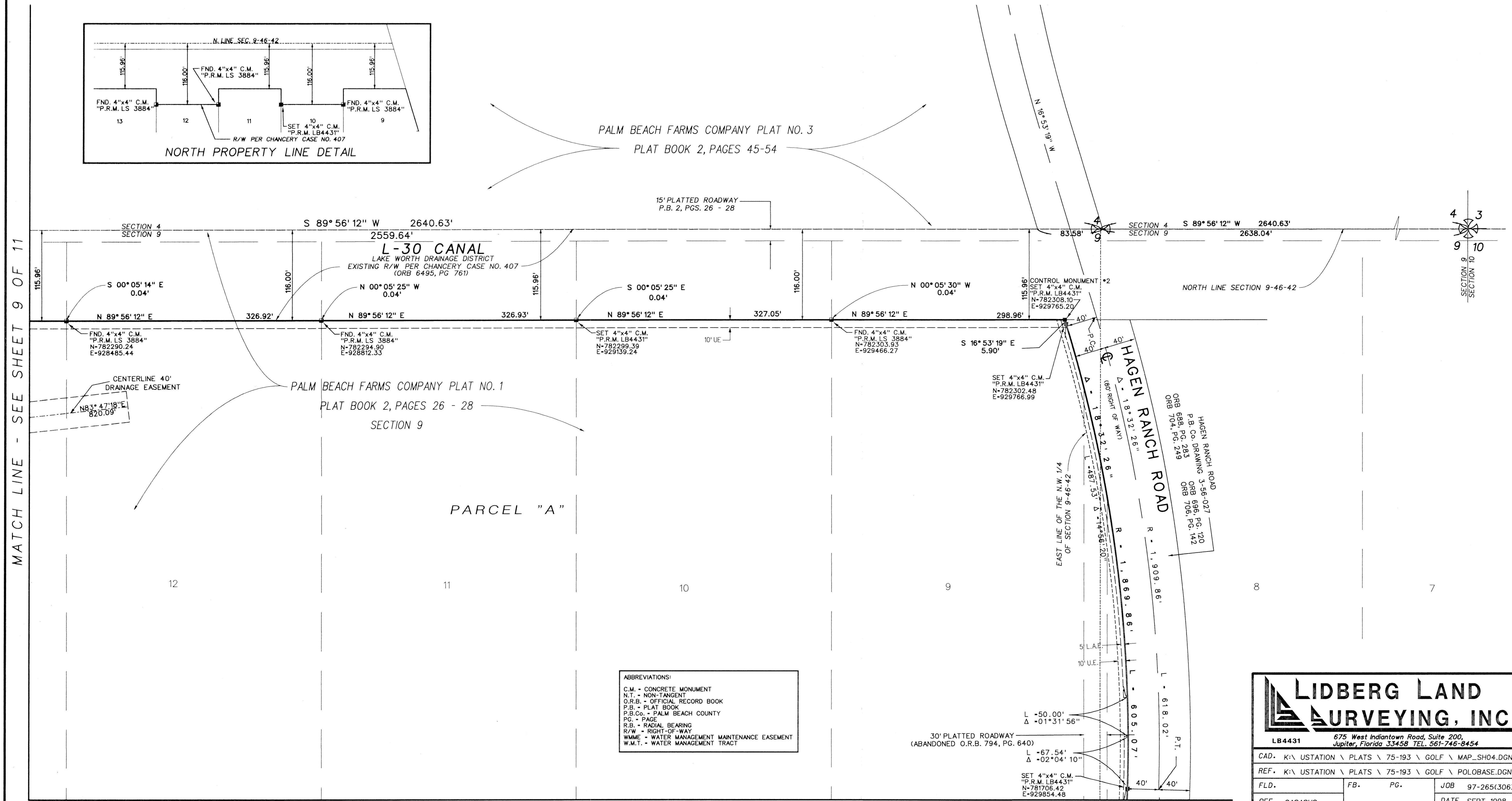
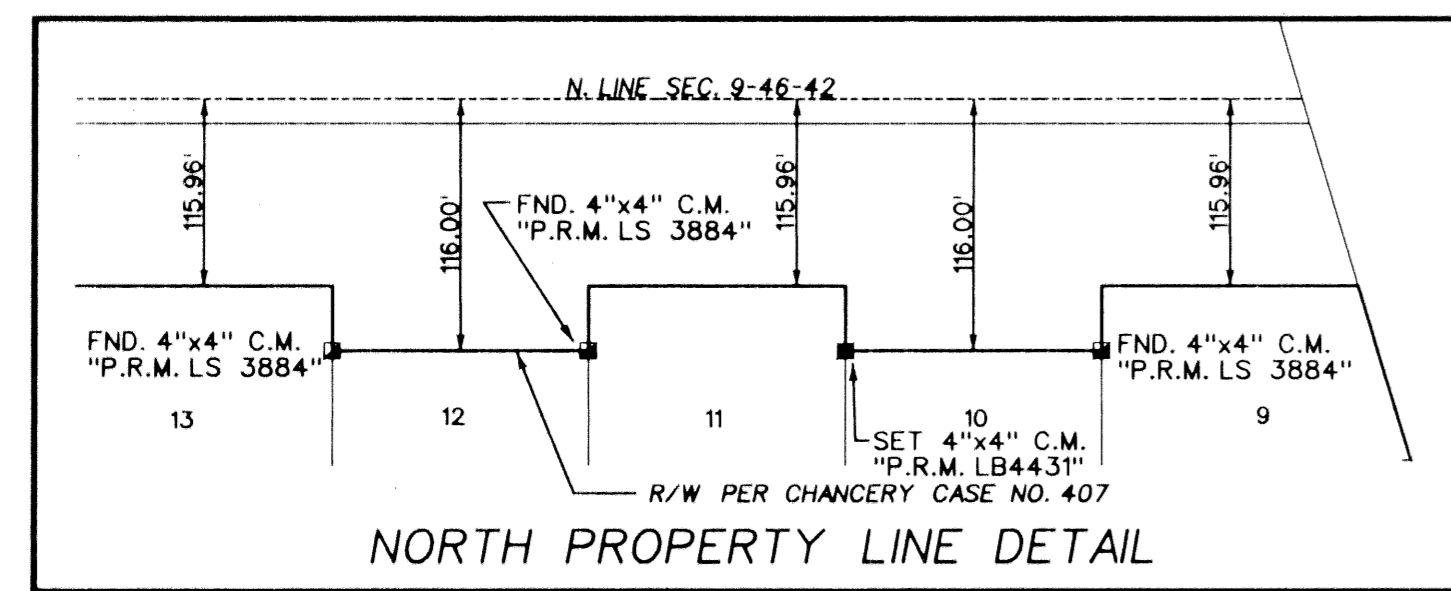
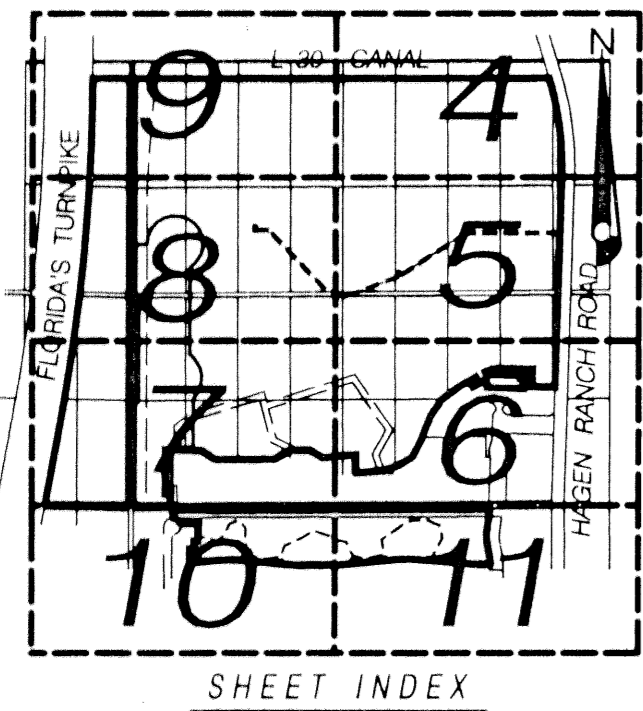
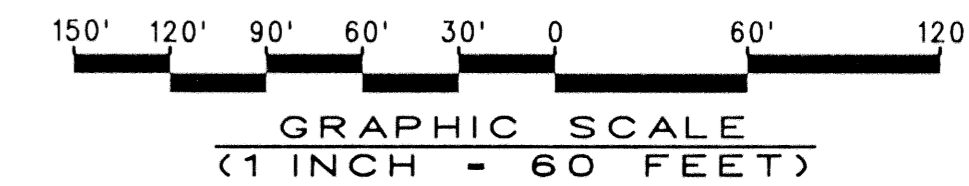
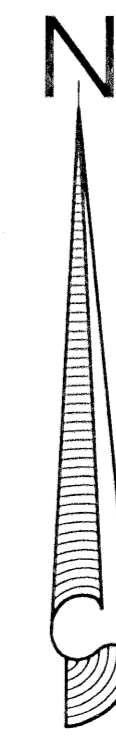
POLO TRACE II GOLF COURSE

(A PART OF POLO TRACE II P.U.D.)

BEING A REPLAT OF A PORTION OF PALM BEACH FARMS COMPANY PLAT NO. 1,
 ACCORDING TO THE PLAT THEREOF, AS RECORDED IN PLAT BOOK 2, PAGES 26 - 28,
 ALSO BEING A REPLAT OF A PORTION OF POLO TRACE II, PLAT NO. 1
 ACCORDING TO THE PLAT THEREOF, AS RECORDED IN PLAT BOOK 75, PAGES 193 - 204,
 PUBLIC RECORDS OF PALM BEACH COUNTY, FLORIDA.

LYING IN SECTIONS 8 AND 9, TOWNSHIP 46 SOUTH, RANGE 42 EAST
 PALM BEACH COUNTY, FLORIDA
 JUNE, 2000 SHEET 4 OF 11

163



ABBREVIATIONS:
 C.M. - CONCRETE MONUMENT
 N.T. - NON-TANGENT
 O.R.B. - OFFICIAL RECORD BOOK
 P.B. - PLAT BOOK
 P.B.Co. - PALM BEACH COUNTY
 PG. - PAGE
 R.B. - RADIAL BEARING
 R/W - RIGHT-OF-WAY
 WMME - WATER MANAGEMENT MAINTENANCE EASEMENT
 W.M.T. - WATER MANAGEMENT TRACT

MATCH LINE - SEE SHEET 9 OF 11

MATCH LINE - SEE SHEET 5 OF 11

LIDBERG LAND SURVEYING, INC.

LB4431 675 West Indiantown Road, Suite 200, Jupiter, Florida 33458 TEL. 561-746-8454

CAD. K:\USTATION \ PLATS \ 75-193 \ GOLF \ MAP_SH04.DGN		
REF. K:\USTATION \ PLATS \ 75-193 \ GOLF \ POLOBASE.DGN		
FLD.	FB. PG.	JOB 97-265(306)
OFF. CASASUS		DATE SEPT. 1998
CKD. D.C.L.	SHEET 4 OF 11	DWG. D97-265P

POLO TRACE II GOLF COURSE
 DRAWN BY: [Name]
 CHECKED BY: [Name]
 DATE: [Date]
 PLOT NAME: POLO TRACE II